

SQL 2008 Express Manual Installation



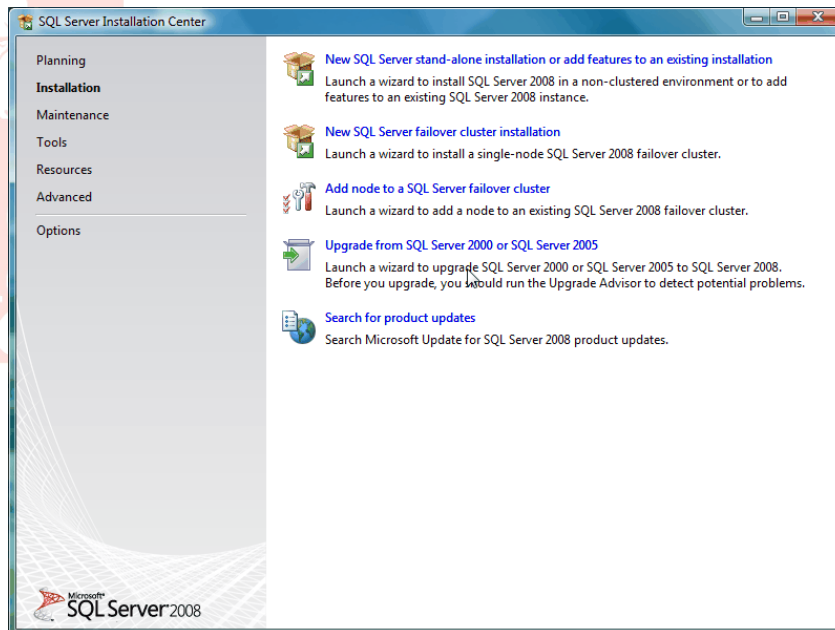
Short Description:

Process to Install SQL 2008 Express Manually

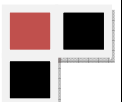
Process:

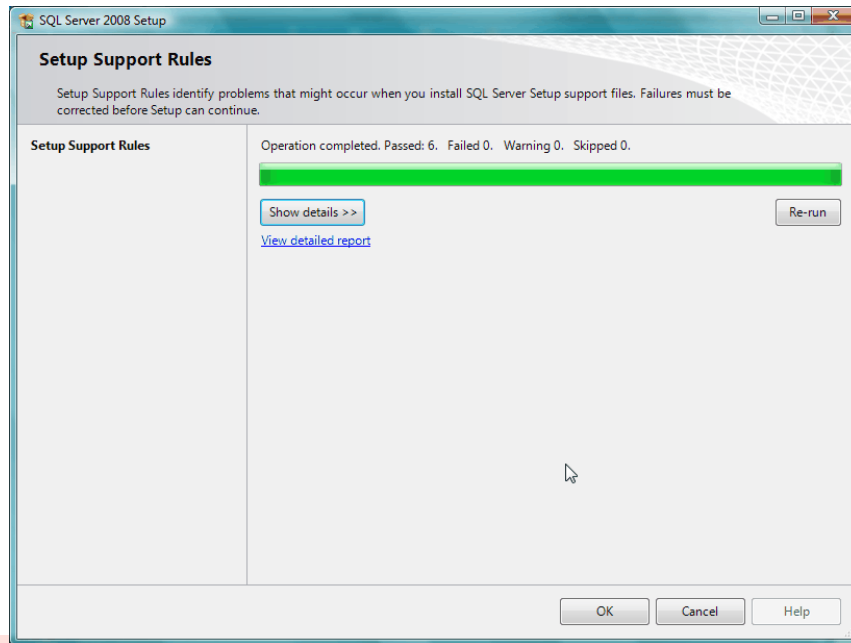
Install Microsoft SQL Server 2008 Express:

1. Make sure you are logged on to the computer as an Administrator
2. Double click on the executable file:
 - a. SQLEXP_x64_ENU.EXE (for 64-bit setup)
 - b. Or SQLEXP_x86_ENU.EXE (for 32-bit setup)
3. Click on Installation on left panel
4. Click on “New SQL Server stand-alone installation or add features to an existing installation”

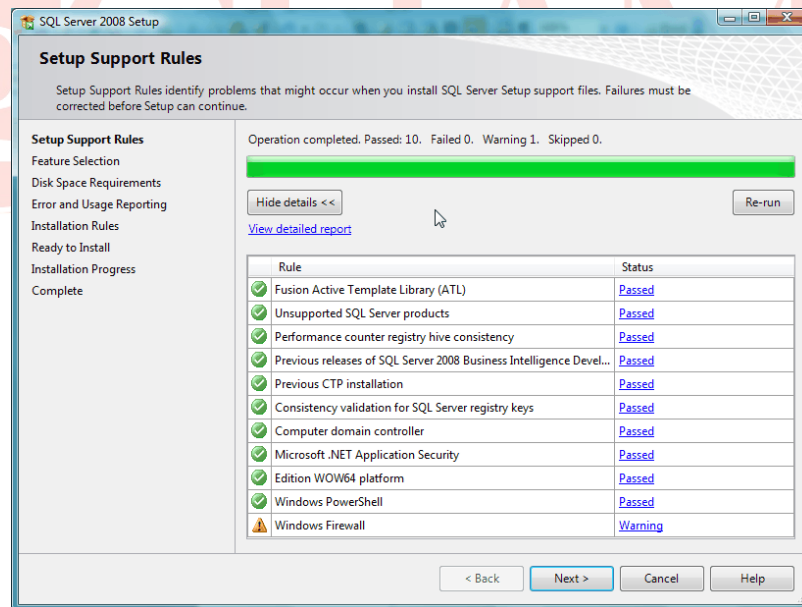


5. Setup Support Rules screen:
 - a. If it fails due to the computer needing reboot, Re-run the test
 - b. If it fails a second time, cancel and reboot the computer
 - c. If all passes, click OK and wait for a bit

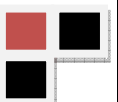




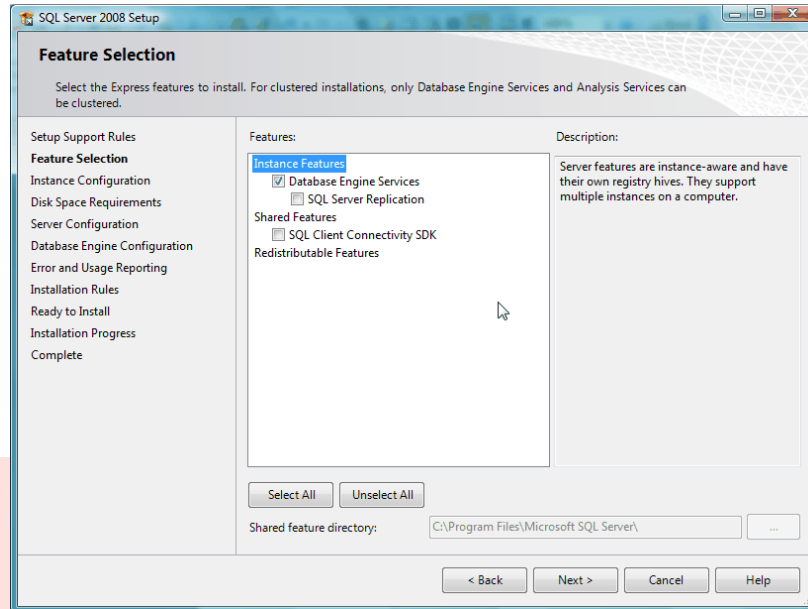
6. Setup Support Files screen:
 - a. Click Install
 - b. Make note of any errors or warnings
 - c. Click Next



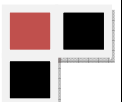
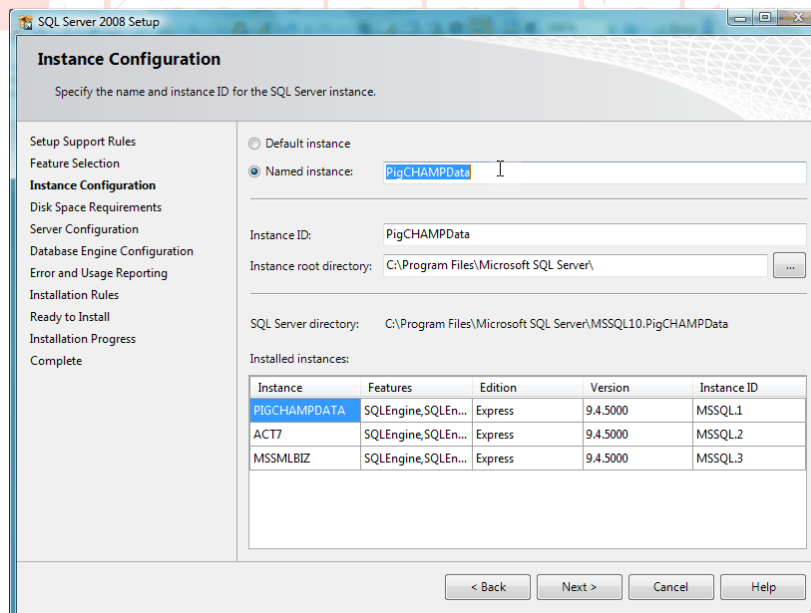
7. Product Key screen:
 - a. Click Next
8. License Terms screen:
 - a. Check the "I accept the license terms" box
 - b. Click Next



9. Feature Selection screen:
 - a. Check the box for “Database Engine Services”
 - b. Click Next

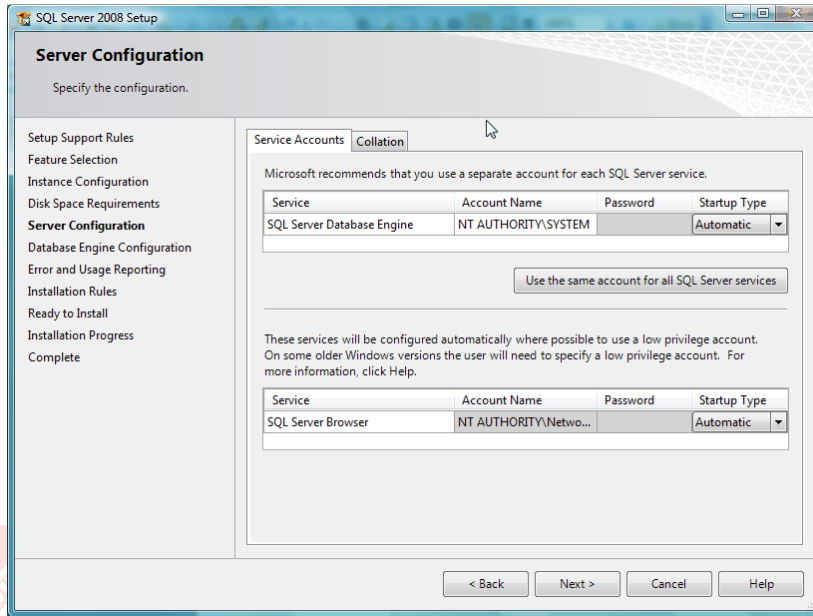


10. Instance Configuration screen:
 - a. Named instance: PigCHAMPData
 - b. Click Next



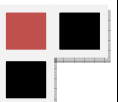
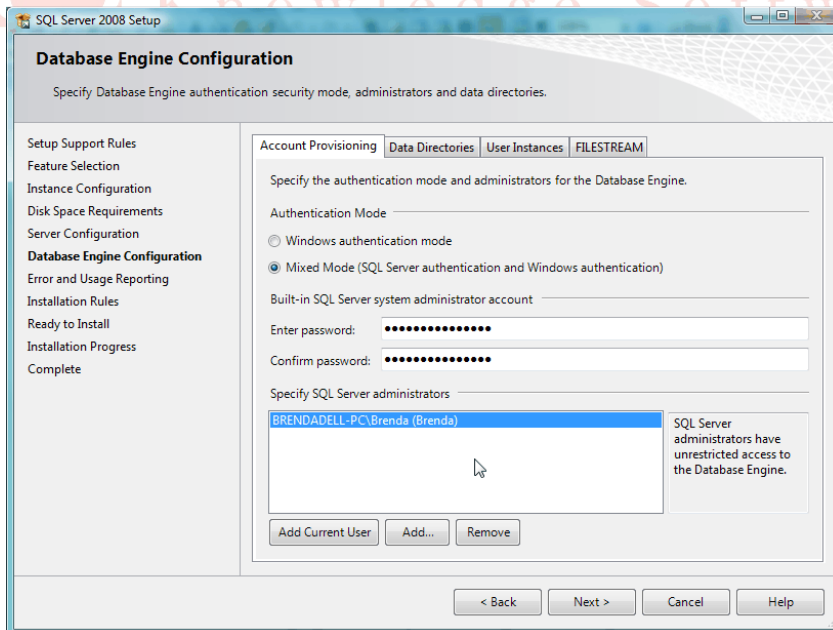
11. Server Configuration screen:

- a. Account Name: NT Authority/SYSTEM
- b. Click Next



12. Database Engine Configuration screen:

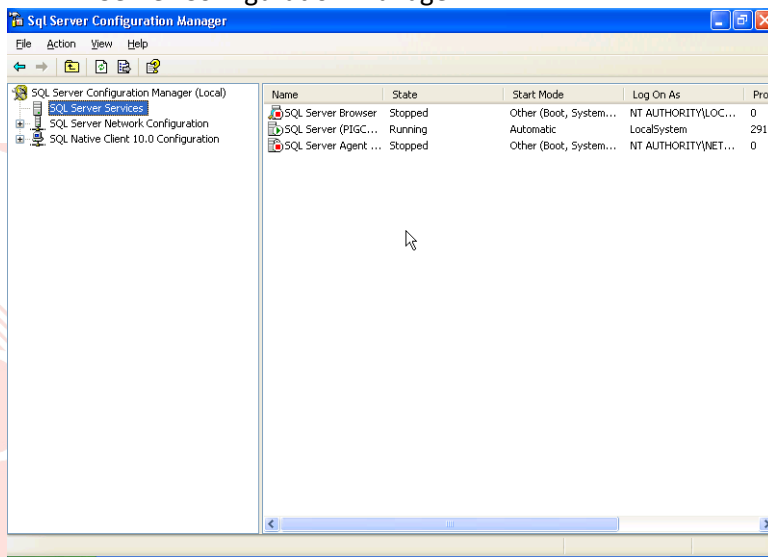
- a. Authentication Mode: Mixed mode
- b. Password: 4fiT5sJAdKm3.62
- c. Click on Add Current User and wait until box is populated
- d. Click Next



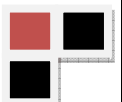
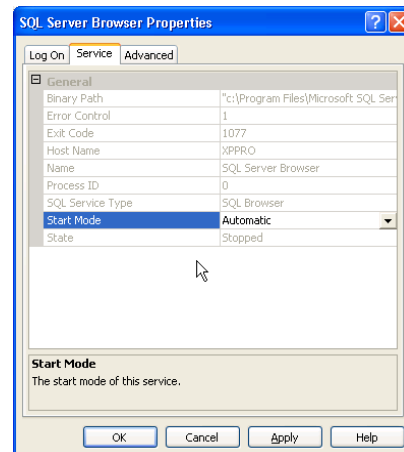
13. Error and Usage Reporting screen:
 - a. Click Next
14. Installation Rules screen:
 - a. Click Next
15. Ready to Install screen:
 - a. Click Install
 - b. Wait – this can take quite some time

Configure Microsoft SQL Server 2008 Express:

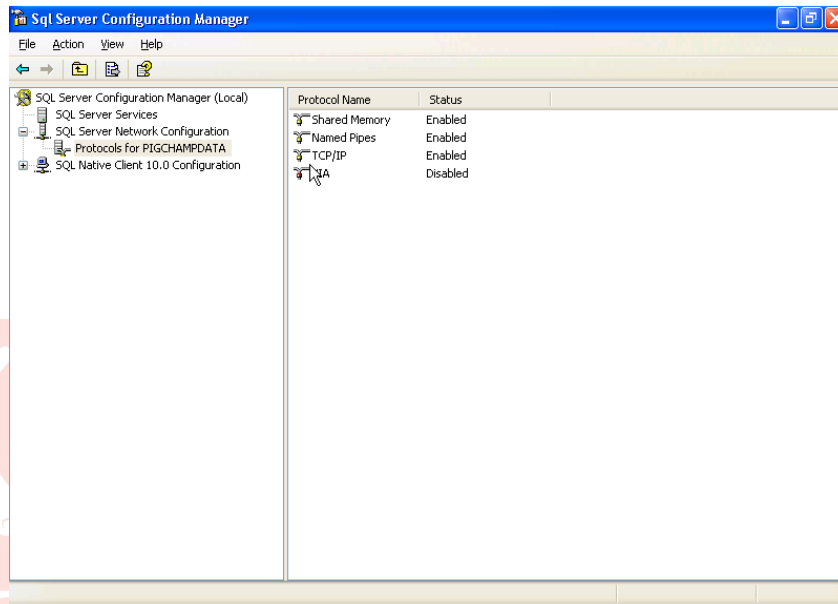
1. Open up SQL Server Configuration Manager
 - a. Click on Start > All Programs > Microsoft SQL Server 2008 > Configuration Tools > SQL Server Configuration Manager



2. Click on SQL Server Services
 - a. SQL Server (PigCHAMPData) and SQL Server Browser should both be running with Start Mode Automatic
 - b. If they are not running, right click and choose Start
 - i. If Start is not an option, choose Properties
 - ii. On the Service tab, change the Start Mode to Automatic
 - iii. Click Apply and then OK
 - iv. Now you should be able to Start the service



3. Click on SQL Server Network Configuration > Protocols for PigCHAMPData
 - a. Shared Memory, Named Pipes and TCP/IP should all be enabled
 - b. VIA should be disabled
 - c. If these are incorrect, right click on the protocol you want to change and either enable or disable the protocol



4. Restart the PigCHAMPData instance
 - a. Right-click on SQL Server (PigCHAMPData) and choose Restart
5. Close SQL Server Configuration Manager

SQL 2008 Express is now installed and set up for PigCHAMP software installation

