

SQL 2014 Express Manual Installation



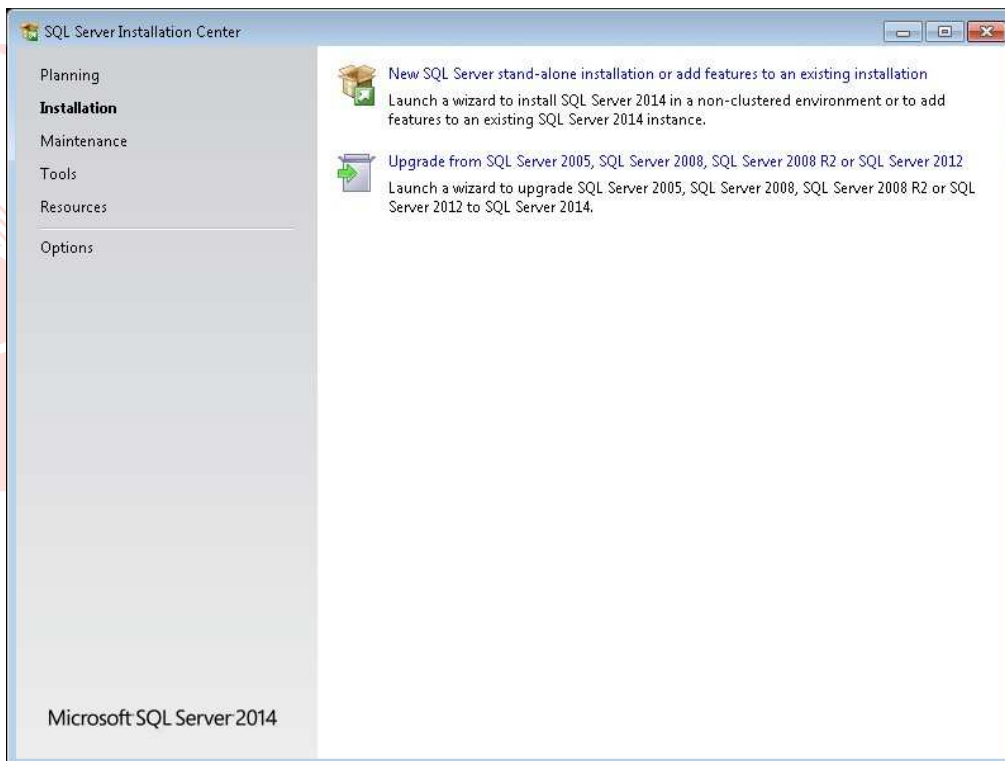
Short Description:

Process to Install Microsoft SQL 2014 Express Manually

Process:

Install Microsoft SQL Server 2014 Express:

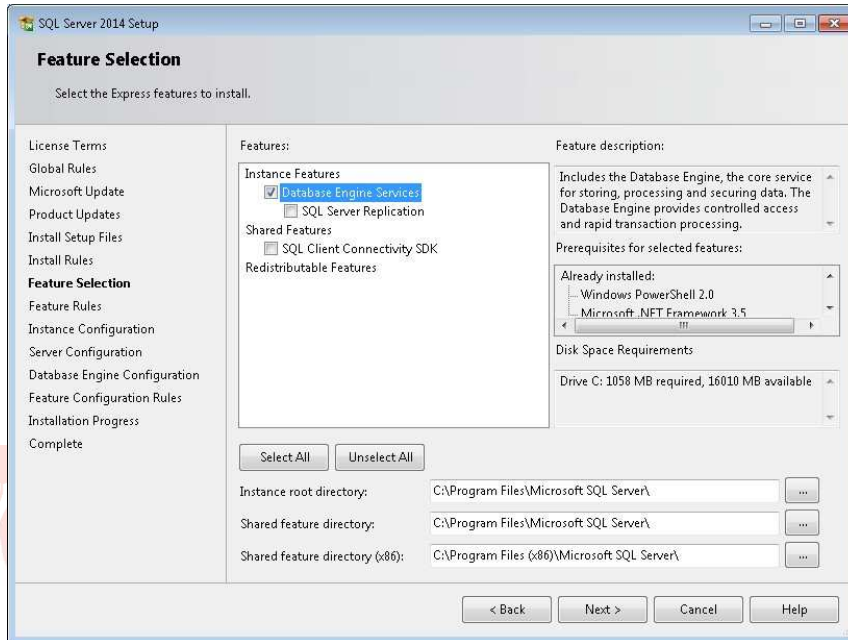
1. Make sure you are logged on to the computer as an Administrator
2. Double click on the executable file for SQL 2014
3. Click on Installation on left panel
4. Click on "New SQL Server stand-alone installation or add features to an existing installation"



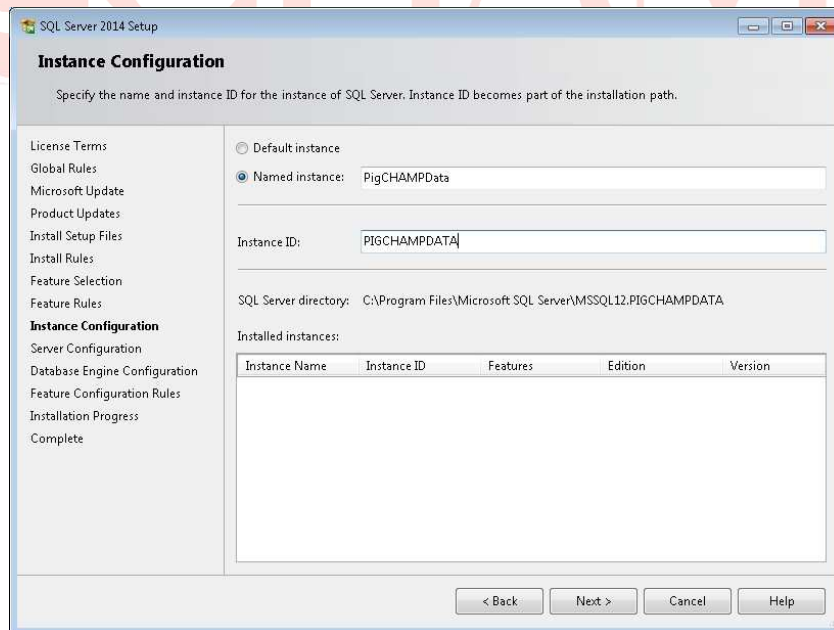
5. License Terms screen:
 - a. Check box to accept license terms, click Next
6. Microsoft Update
 - a. Allow the program to update if needed (if connected to internet only)
7. Install Rules screen:
 - a. If it fails due to the computer needing reboot, Re-run the test
 - b. If it fails a second time, cancel and reboot the computer
 - c. If all passes, it will continue automatically to the next screen



8. Feature Selection screen:
 - a. Check the box for "Database Engine Services"
 - b. Click Next

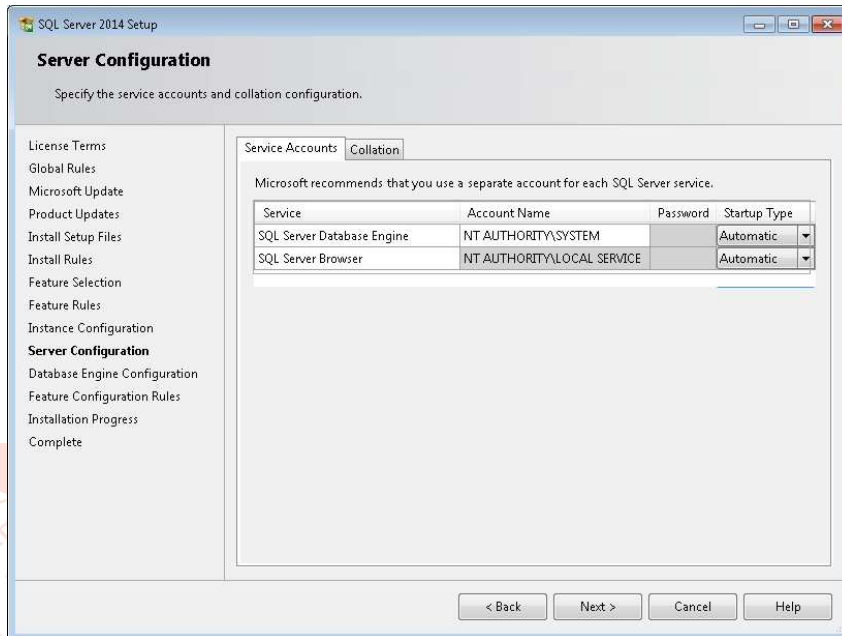


9. Instance Configuration screen:
 - a. Named instance: PigCHAMPData
 - b. Click Next



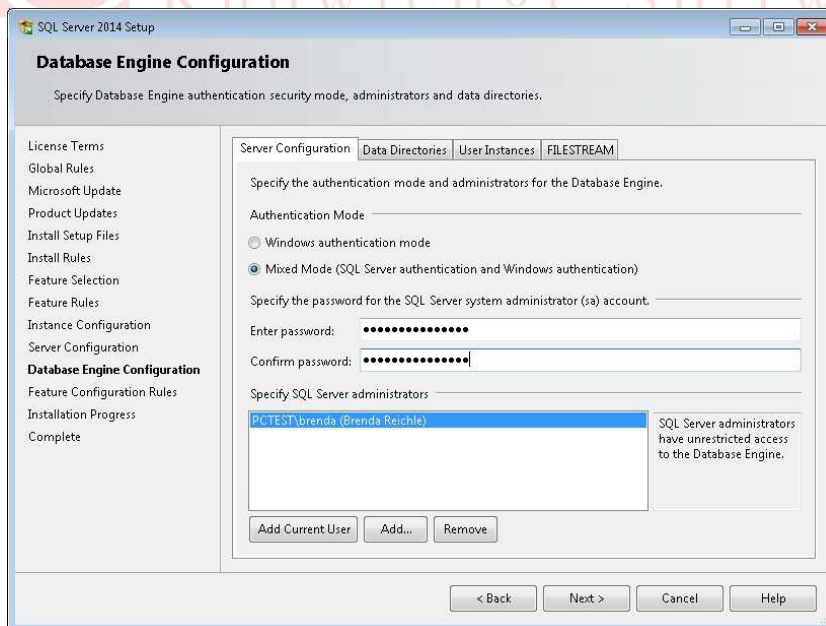
10. Server Configuration screen:

- a. Account Name for SQL Server Database Engine: NT Authority/SYSTEM
- b. Account Name for SQL Server Browser: NT Authority/Local Service
- c. Startup Type for both Database Engine and Browser: Automatic
- d. Click Next



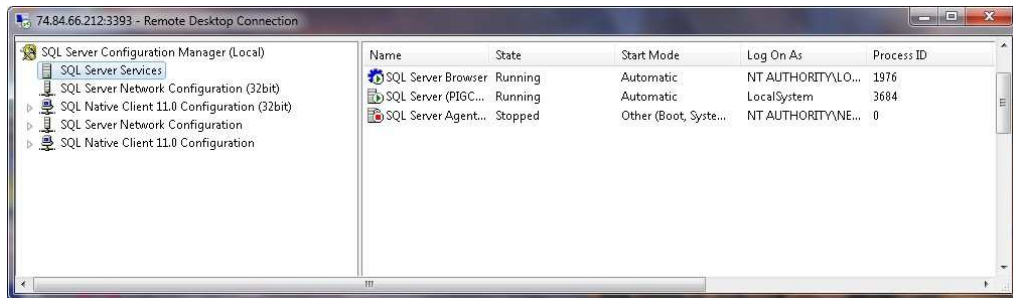
11. Database Engine Configuration screen:

- a. Authentication Mode: Mixed mode
- b. Password: 4fiT5sJAdKm3.62
- c. Click on Add Current User and wait until box is populated
- d. Click Next



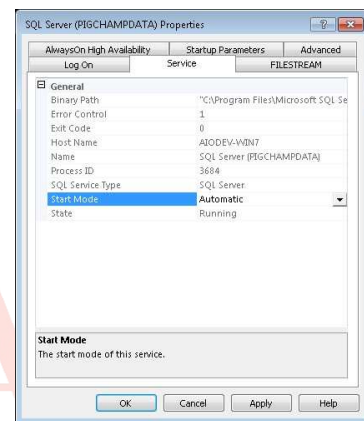
Configure Microsoft SQL Server 2014 Express:

1. Open up SQL Server Configuration Manager
 - a. Click on Start > All Programs > Microsoft SQL Server 2014 > Configuration Tools > SQL Server Configuration Manager

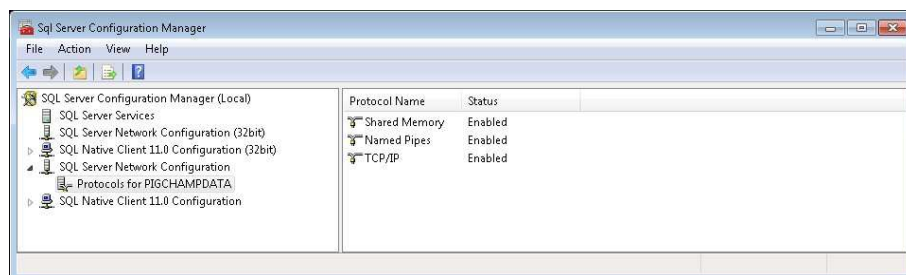


2. Click on SQL Server Services
 - a. SQL Server (PigCHAMPData) and SQL Server Browser should both be running with Start Mode Automatic
 - b. If they are not running, right click and choose Start

- i. If Start is not an option, choose Properties
 - ii. On the Service tab, change the Start Mode to Automatic
 - iii. Click Apply and then OK
 - iv. Now you should be able to Start the service



3. Click on SQL Server Network Configuration > Protocols for PigCHAMPData
 - a. Shared Memory, Named Pipes and TCP/IP should all be enabled
 - b. If these are incorrect, right click on the protocol you want to change to enable the protocol



4. Restart the PigCHAMPData instance
 - a. Right-click on SQL Server (PigCHAMPData) and choose Restart
5. Close SQL Server Configuration Manager

SQL 2014 Express is now installed and set up for PigCHAMP software installation

