

SQL 2012 Express Manual Installation



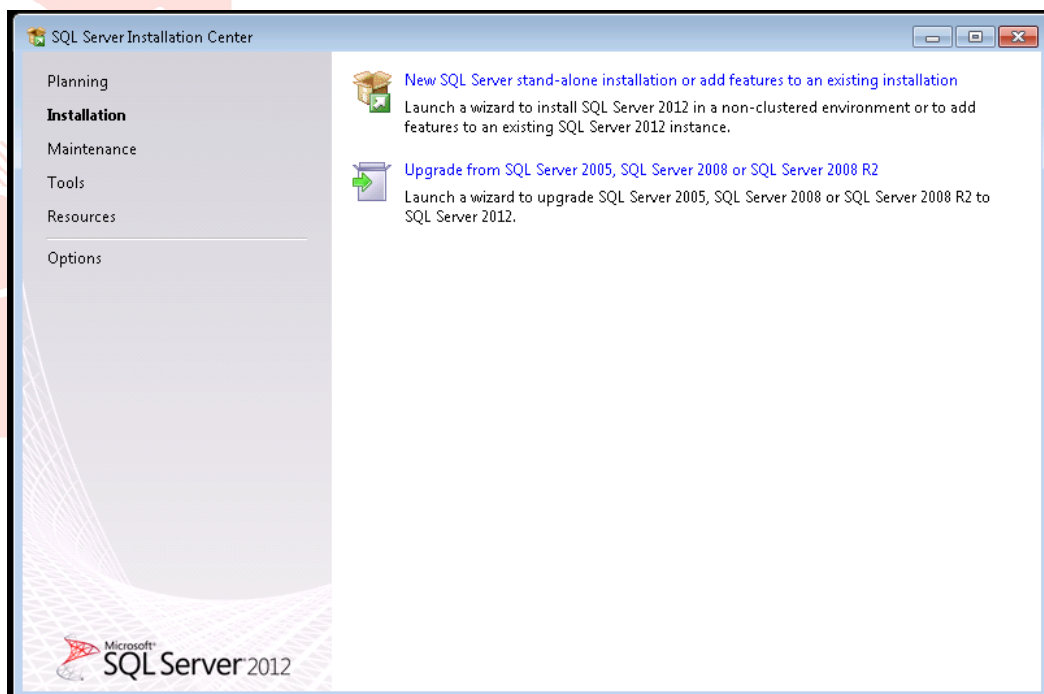
Short Description:

Process to Install SQL 2012 Express Manually

Process:

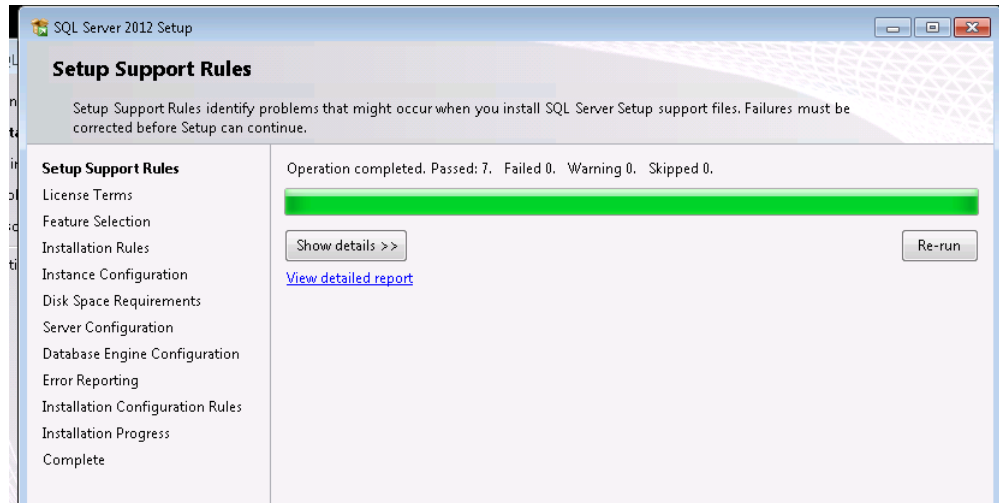
Install Microsoft SQL Server 2012 Express:

1. Make sure you are logged on to the computer as an Administrator
2. Double click on the executable file for SQL 2012
3. Click on Installation on left panel
4. Click on "New SQL Server stand-alone installation or add features to an existing installation"

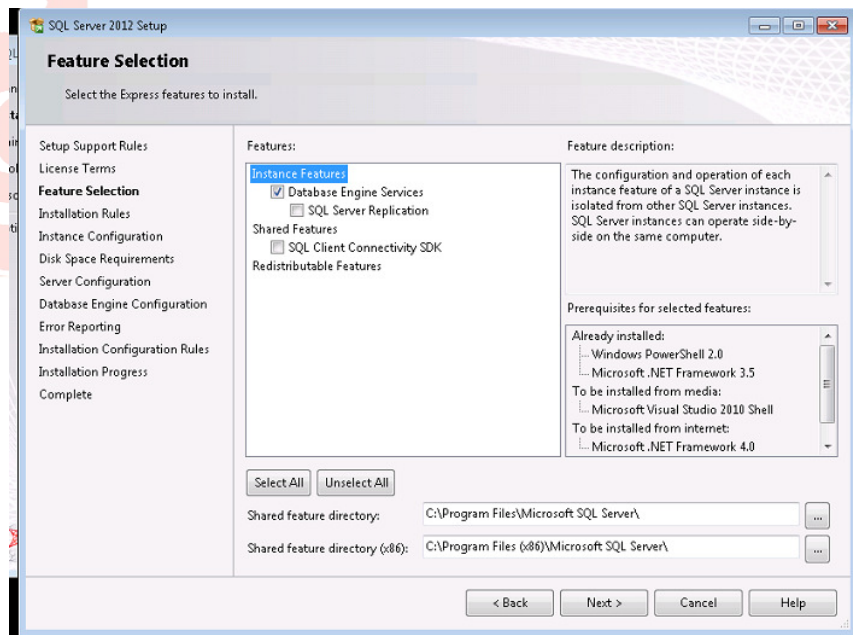


5. Product Updates screen:
 - a. The program will check for updates – allow it to update if needed
6. Install Setup Files
 - a. Click Install when all steps are completed
7. Setup Support Rules screen:
 - a. If it fails due to the computer needing reboot, Re-run the test
 - b. If it fails a second time, cancel and reboot the computer
 - c. If all passes, click OK and wait for a bit



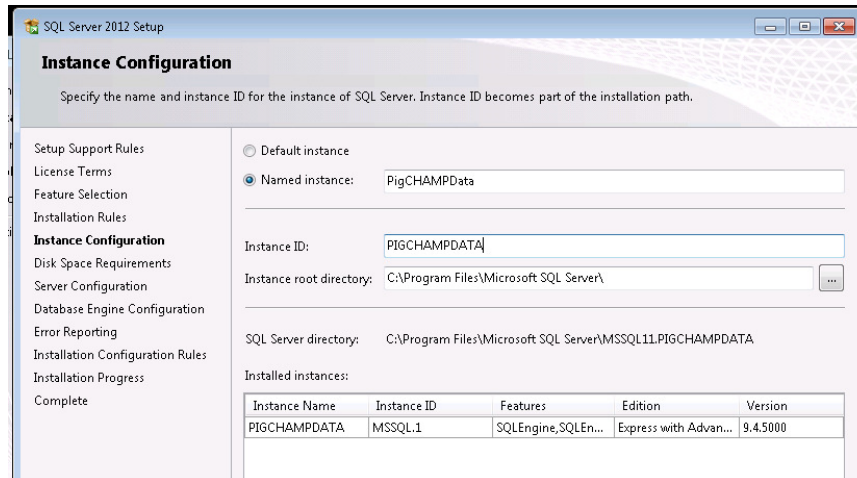


8. License Terms screen:
 - a. Check the “I accept the license terms” box
 - b. Click Next
9. Feature Selection screen:
 - a. Check the box for “Database Engine Services”
 - b. Click Next



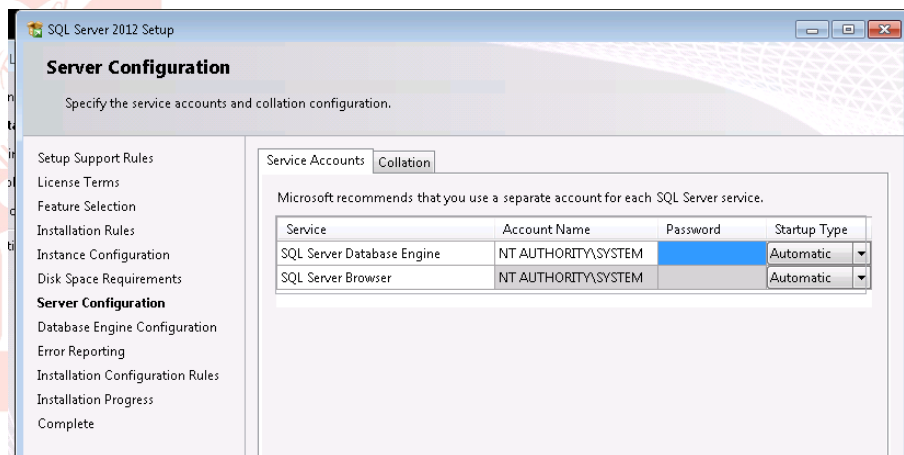
10. Instance Configuration screen:
 - a. Named instance: PigCHAMPData
 - b. Click Next





11. Server Configuration screen:

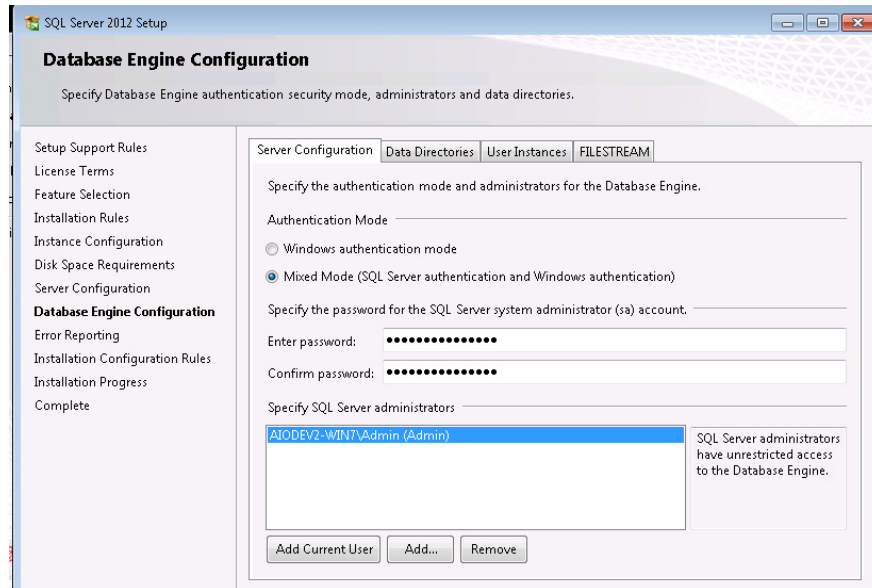
- Account Name: NT Authority/SYSTEM
- Click Next



12. Database Engine Configuration screen:

- Authentication Mode: Mixed mode
- Password: 4fiT5sJAdKm3.62
- Click on Add Current User and wait until box is populated
- Click Next



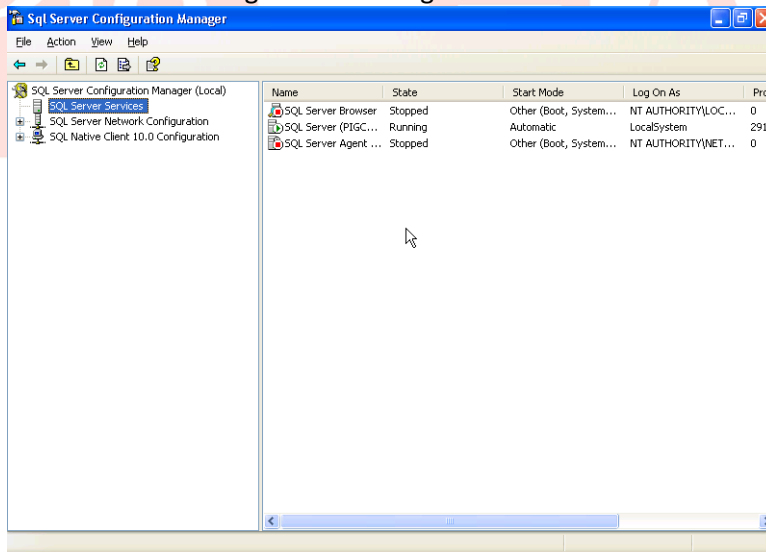


13. Error and Usage Reporting screen:

- a. Click Next

Configure Microsoft SQL Server 2012 Express:

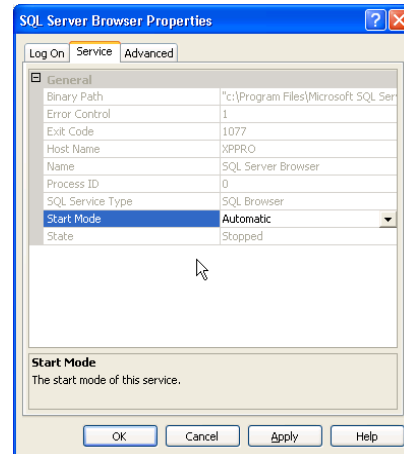
1. Open up SQL Server Configuration Manager
 - a. Click on Start > All Programs > Microsoft SQL Server 2012 > Configuration Tools > SQL Server Configuration Manager



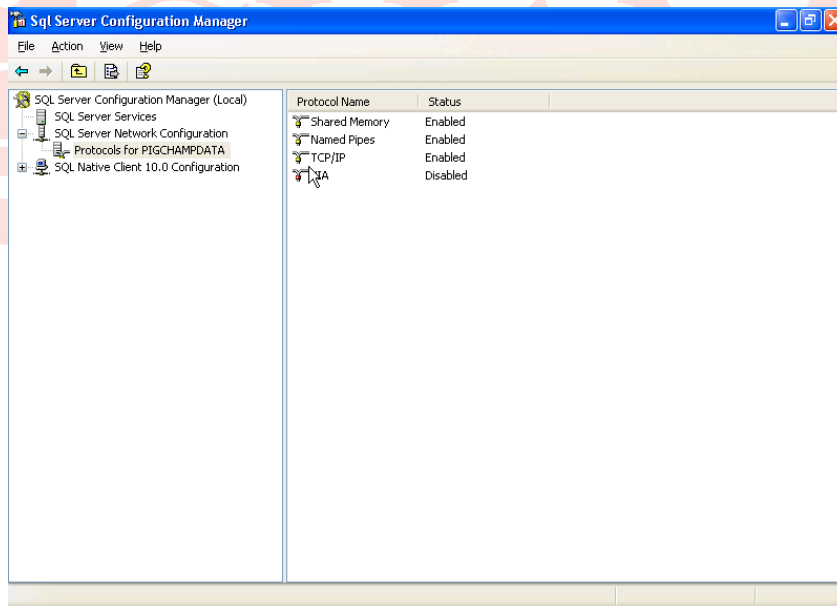
2. Click on SQL Server Services



- a. SQL Server (PigCHAMPData) and SQL Server Browser should both be running with Start Mode Automatic
- b. If they are not running, right click and choose Start
 - i. If Start is not an option, choose Properties
 - ii. On the Service tab, change the Start Mode to Automatic
 - iii. Click Apply and then OK
 - iv. Now you should be able to Start the service



3. Click on SQL Server Network Configuration > Protocols for PigCHAMPData
 - a. Shared Memory, Named Pipes and TCP/IP should all be enabled
 - b. VIA should be disabled
 - c. If these are incorrect, right click on the protocol you want to change and either enable or disable the protocol



4. Restart the PigCHAMPData instance
 - a. Right-click on SQL Server (PigCHAMPData) and choose Restart
5. Close SQL Server Configuration Manager

SQL 2012 Express is now installed and set up for PigCHAMP software installation

